

SmokeESC RCP-3100

Digital Remote Control Panel

Device description

The RCP-3100 is a digital remote control panel for use in the SmokeESC system. The RCP-3100 allows you to monitor, activate and block the state of one CAB-3100 board. Thanks to the built-in ignition switch, it provides protection against unauthorized access. A clear and easy-to-use interface enables quick reaction when the situation requires it. Digital communication with the board allows you to control even several boards from one place.

Features

Digital communication

Digital communication in the loop topology enables the installation of panels at any distance from the board and the control and monitoring of the status of several boards.

Easy-to-use

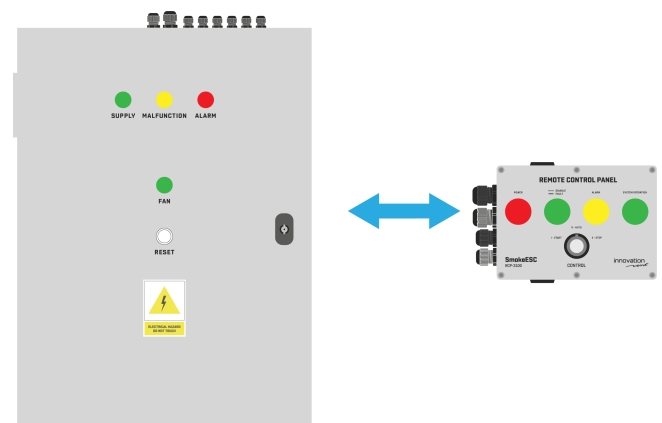
A clear and easy-to-use interface enables quick response in case of fire and convenient tests during commissioning and inspection. Large indicator lights inform about the status of the connected board.

Protection against unauthorized access

Thanks to the built-in ignition key switch, it protects against unauthorized access and at the same time allows for quick start-up.

Convenient connection

Plenty of space in the housing. Multiple cable glands allow for quick and easy installation.



Technical parameters

PARAMETER	VALUE
Supply voltage	24 V DC
Power consumption	typ. 50 mA, $I_{MAX} < 110$ mA
Operation temperature	from -25 °C to +50 °C
Enclosure protection rating	IP54
Dimensions	205x140x70 mm
Weight	500 g

